



Mountain View Cowl

By Emily Myers

Setup: CO 128 stitches join in the round careful not to twist stitches. Place beginning of round marker, and I find it helpful to place a mid round marker after stitch 64.

Knit 10 rows K2P2 in Color A

Knit 1 row with Color A

Decrease Row: *Knit14, K2tog* repeat to end of row (120 stitches)

K 3 rounds

Work Mountain View Chart on Page 2, repeat stitch pattern 2 times

Knit 9 rows K2P2 Color C

Bind off, and weave in the ends

Yarn

Fingering weight held double or worsted weight, 3 colors 50 g each (~200 yd fingering, 100 yd worsted each).

Sample shown in: 3 Wedgewood Fibers One of a Kind Colorways

Gauge:

4.5 stitches per 1" in stockinette

Needles

24 " size 7 circular needle

Notions

2 Stitch Markers

Legend

CO-Cast On

K-Knit

K2tog-Knit

Follow me on Instagram,
@wedgewoodfibers to see my latest work

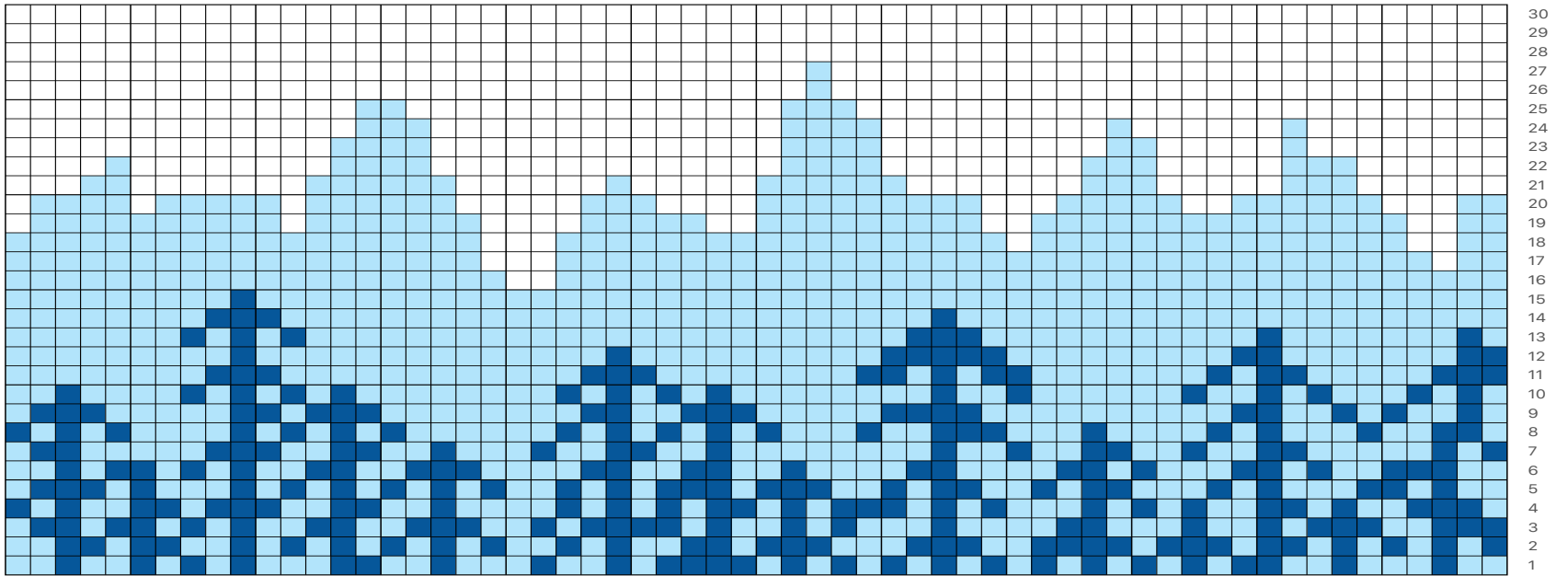





To order my yarn and see my other products, visit

www.wedgewoodfibers.com

Mountain View Cowl

60 59 58 57 56 55 54 53 52 51 50 49 48 47 46 45 44 43 42 41 40 39 38 37 36 35 34 33 32 31 30 29 28 27 26 25 24 23 22 21 20 19 18 17 16 15 14 13 12 11 10 9 8 7 6 5 4 3 2 1



-  Contrast Color A
-  Contrast Color B
-  Contrast Color C